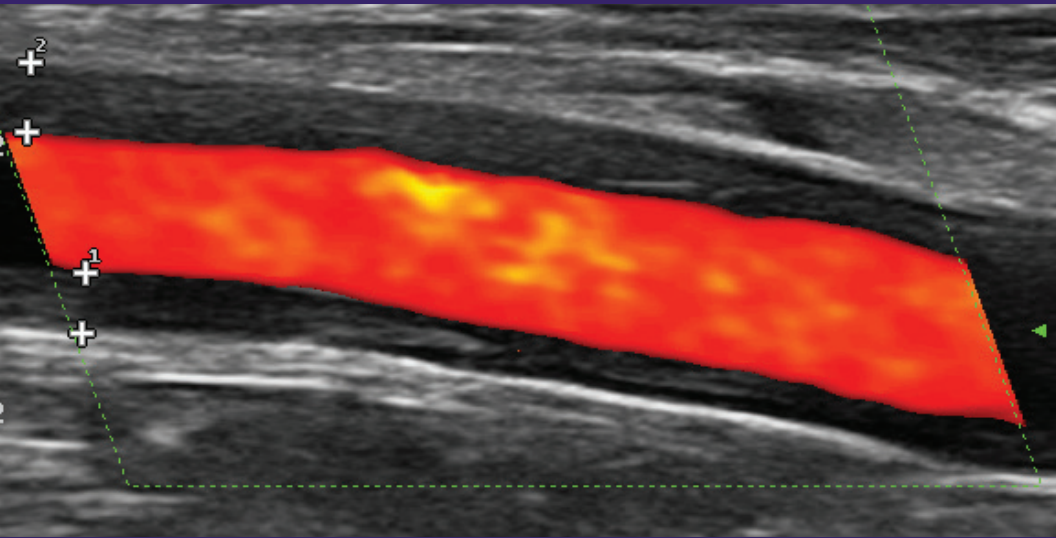


UW Medicine

UW SCHOOL  
OF MEDICINE

NORTH AMERICAN WORKSHOP  
ON VASCULAR ULTRASOUND  
IN LARGE VESSEL VASCULITIS



October 25-27, 2019  
Friday-Sunday

South Campus Center, Room 316  
University of Washington Campus  
Seattle, WA

Sponsored by UW School of Medicine  
Division of Rheumatology  
Office of Continuing Medical Education

## WHO SHOULD ATTEND

This course is directed toward rheumatologists in the United States.

## COURSE DESCRIPTION

This course is designed to provide basic training for the rheumatologist in performing vascular ultrasound for the diagnosis of large vessel vasculitis. Hands-on training will be a significant component of this activity, partnered with expert faculty in the field, who will discuss and demonstrate how to identify the basic vascular pathological findings. Intermediate to advanced skill in the performance of ultrasound is strongly recommended as a prerequisite to this course.

## COURSE OBJECTIVES

Upon completion of this activity, attendees will be able to:

- Identify normal vascular sonography of the temporal arteries and branches, large supra-aortic, and axillary vessels.
- Review vessel pathology of the temporal arteries and branches, large supra-aortic and axillary vessels, with focus on large vessel vasculitis.
- Properly perform vascular ultrasound scanning techniques and ultrasound settings to optimize image quality.
- Determine indications for vascular ultrasound for the diagnosis of large vessel vasculitis.
- Know how to incorporate vascular ultrasound into your Rheumatology practice.

## ACCREDITATION

### Accreditation with Commendation

The University of Washington School of Medicine is accredited by the Accreditation Council for Continuing Medical Education to provide continuing medical education for physicians.

### Credit Designation

The University of Washington School of Medicine designates this live activity for a maximum of 15.5 AMA PRA Category 1 Credits™. Physicians should claim only the credit commensurate with the extent of their participation in the activity.



## FEES AND REGISTRATION

Registration Fee	
All Attendees	\$2,000

The University of Washington Continuing Medical Education Office is a self-sustaining unit and does not depend on or receive public monies in support of its educational efforts. The course fees are estimated to include transcript of AMA PRA Category 1 Credits™, access to online instruction materials, catering, taxes, faculty planning and salaries.

To enroll, please register online at [uwcme.org](http://uwcme.org). If you have not received confirmation prior to your departure for the course, please contact the CME office at 206.543.1050. Continuing Medical Education will not be responsible for expenses incurred by an individual who is not confirmed if space is not available at the course.

## CANCELLATION POLICY

The Office of Continuing Medical Education must receive written notification of your cancellation by **October 11, 2019**. A \$75.00 processing fee will be deducted from refund requests received by this date. No refunds will be issued following **October 11, 2019**. The Office of Continuing Medical Education reserves the right to cancel this course twenty days prior to the course date when a minimum enrollment is not met or for other reasons that prevent the University from holding the course. Each registrant will be notified by telephone followed by written notification and a full refund. The University of Washington is not responsible for any other costs incurred. Contact the CME Office with questions: call 206.543.1050 or email [cme@uw.edu](mailto:cme@uw.edu).

## ONLINE SYLLABUS

Course material will be available online at uwcme.org (for conference registrants only). Materials will be available beginning **October 18, 2019**, for registrants to print and/or download. A booklet with the conference agenda and pages for note-taking will be provided at the conference. No printed presentation materials will be provided.

## ATTENDANCE POLICY

Course activities are exclusively reserved for attendees. Badges provided at registration are required for entrance into all functions and will be strictly enforced.

For the optimum learning experience of all, infants and children are not permitted in the education space for the duration of the program. All CME events support parents and nursing mothers by providing access to lactation spaces. Please send an email to [cme@uw.edu](mailto:cme@uw.edu) by **October 11, 2019** if you will need to utilize lactation spaces.

## DIETARY REQUESTS

UW CME takes into consideration diverse nutritional preferences and restrictions when planning our complimentary menu. However, those individuals who might find that our menu is not completely aligned to their specific nutritional needs are welcome to bring their own food items.

If you have dietary restrictions, please send an email to [cme@uw.edu](mailto:cme@uw.edu) by **October 11, 2019**.

## SPECIAL SERVICES

To request disability accommodation, contact the Disability Services Office at 206-543-6450 (voice), 206-543-6452 (TTY), 206-685-7264 (fax), or [dso@uw.edu](mailto:dso@uw.edu). The University of Washington makes every effort to honor disability accommodation requests. Requests can be responded to most effectively if received as far in advance of the event as possible, preferably at least 10 days.



## HOTEL ACCOMMODATIONS

Please contact the hotels below directly. No room block has been reserved.

**Silver Cloud Inn**  
5036 25th Avenue NE  
Seattle, WA 98105  
206.526.5200 or 800.205.6940  
Rates depend on availability  
Ask for "UW Conference rate"

**Marriott Residence Inn**  
4501 12th Avenue NE  
Seattle, WA 98105  
206.322.8887 or  
888.236.2427  
Rates depend on availability  
Ask for "UW rate"

**Watertown Hotel**  
4242 Roosevelt Way NE  
Seattle, WA 98105  
206.826.4242 or 888.944.4242  
Rates depend on availability  
Ask for "UW Conference rate"

# Course Faculty

---

## COURSE CO-CHAIRS

**Alison Bays, MD, MPH, RhMSUS**  
Associate Program Director  
Division of Rheumatology  
Co-Director, UW Fast Track Clinic

**Elizabeth Jernberg, MD, RMSK**  
Clinical Associate Professor  
Division of Rheumatology  
Co-Director, UW Fast Track Clinic  
Virginia Mason Medical Center

## PLANNING COMMITTEE

**P. Scott Pollock, MD, FACP, RMSK**  
Emeritus Clinical Professor  
Division of Rheumatology  
Co-Director, UW Fast Track Clinic

**Ingeborg Saksen, MD, FACP, RhMSUS**  
Clinical Associate Professor  
Division of Rheumatology  
Co-Director, UW Fast Track Clinic

## GUEST FACULTY

**Wolfgang Schmidt, MD**  
Professor  
Charité University Medicine  
Chief Senior Physician  
Immanuel Krankenhaus Berlin  
Medical Center for Rheumatology Berlin-Buch  
Berlin, Germany

**Andreas Diamantopoulos, MD, PhD, MPH**  
Consultant (Rheumatology)  
Department of Rheumatology  
Martina Hensens Hospital  
Bærum, Norway

**Stavros Chrysidis, MD**  
Department Head  
Southwestern Jutland Hospital  
Esbjerg, Denmark

**Lene Terslev, MD, PhD**  
Associate Professor  
Head of Ultrasound Unit  
Center for Rheumatology and Spine Diseases  
Rigshospitalet Glostrup  
Copenhagen, Denmark

**Paul DeMarco, MD, FACP, FACP, RhMSUS**  
Partner  
Arthritis and Rheumatism Associates, PC  
Medical Director  
The Center for Rheumatology and Bone Research  
Clinical Associate Professor of Medicine  
Georgetown University School of Medicine  
Washington, D.C.

## Friday, October 25, 2019

---

### 12:30 Registration

- 1:30 Doppler Physics and Applications of Color Doppler Ultrasound -  
*Lene Terslev, MD, PhD*
- 2:00 How to Optimize the Use of Color Doppler in Vascular Ultrasound -  
*Lene Terslev, MD, PhD*
- 2:30 How to Correctly Adjust Your Ultrasound Equipment to Perform a  
Vascular Ultrasound Exam - *Wolfgang Schmidt, MD*
- 3:30 Live Demonstration: Adjusting Your Ultrasound Equipment to Perform a  
Vascular Ultrasound Exam - *Wolfgang Schmidt, MD*

### 4:00 Break

- 4:30 Hands-On Scanning: Adjusting Your Ultrasound Equipment for  
Vascular Ultrasound

### 6:30 Adjourn

## Saturday, October 26, 2019

---

### 8:00 Sign-in and Continental Breakfast

- 8:30 Ultrasound of the Temporal Arteries: Techniques, Pitfalls and Pathological  
Findings - *Wolfgang Schmidt, MD*
- 9:00 Live Demonstration: Examining the Temporal Artery - *Wolfgang Schmidt, MD*

### 9:30 Break

- 10:00 Hands-On Scanning: Examining the Temporal Artery - *Wolfgang Schmidt, MD*

### 12:00 Lunch (provided)

- 1:00 Ultrasound of the Large Vessels - *Andreas Diamantopoulos, MD, PhD, MPH*
- 1:30 Live Demonstration: Examining the Large Vessels -  
*Andreas Diamantopoulos, MD, PhD, MPH*

### 2:00 Break

- 2:30 Hands-On Scanning: Examining the Large Vessels

### 5:30 Adjourn

## Sunday, October 27, 2019

---

### 8:00 Sign-in and Continental Breakfast

- 8:30 Hands-On Scanning: Temporal Artery and Large Vessels

### 10:30 Break

- 10:45 Incorporating Vascular Ultrasound Into Your Practice: Fast-Track Clinic, Billing,  
and Other Practical Matters  
*Stavros Chrysidis, MD; Paul DeMarco, MD, FACP, FACR, RhMSUS; and  
Ingeborg Saksen, MD, FACP, RhMSUS*
- 12:00 Panel Discussion: Incorporating Vascular Ultrasound Into Your Practice -  
*Stavros Chrysidis, MD; Paul DeMarco, MD, FACP, FACR, RhMSUS; and  
Ingeborg Saksen, MD, FACP, RhMSUS*

### 12:45 Adjourn

**UW Medicine**

---

UW SCHOOL  
OF MEDICINE

---

University of Washington  
Continuing Medical Education  
Box 359558  
Seattle, WA 98195-9558

**Vascular Ultrasound in Large Vessel Vasculitis**  
October 25-27, 2019

Register online at **[uwcme.org](http://uwcme.org)**